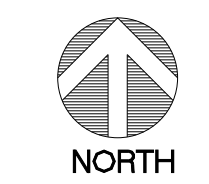
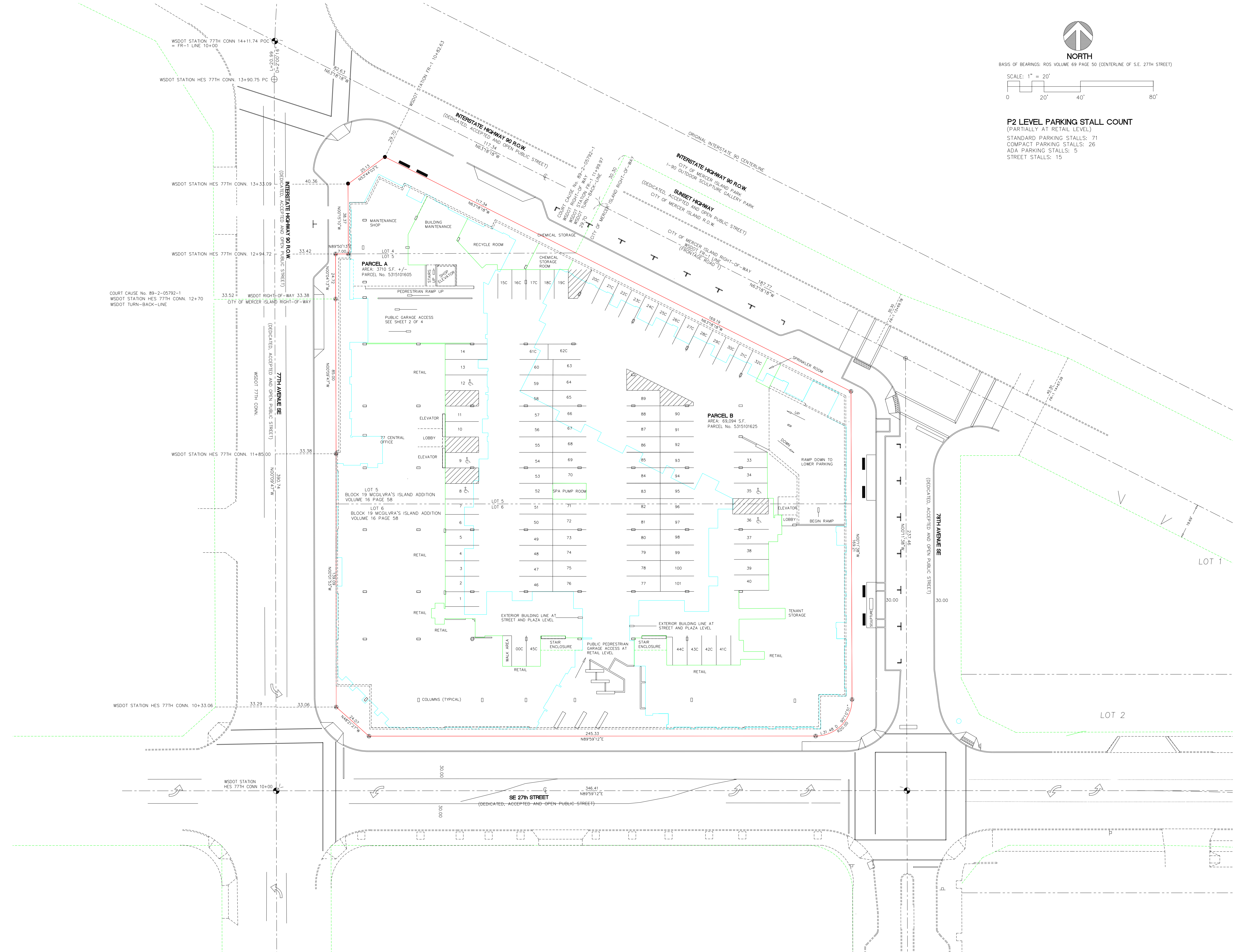


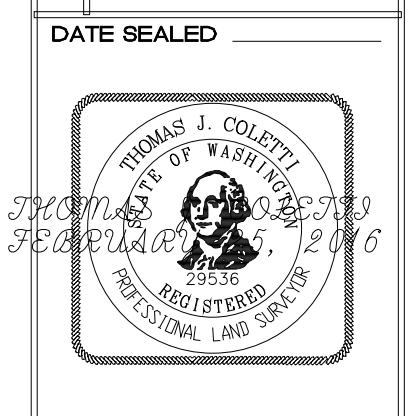
ALTA / ACSM LAND TITLE SURVEY  
 77 CENTRAL APARTMENTS  
 A PORTION OF THE NW QUARTER OF THE NE QUARTER OF SECTION 12, TWP. 24N., RGE. 04E., W.M.  
 CITY OF MERCER ISLAND, WASHINGTON  
 P2 LEVEL PARKING



SCALE: 1" = 20'  
 0 20' 40' 80'

**P2 LEVEL PARKING STALL COUNT**  
 (PARTIALLY AT RETAIL LEVEL)  
 STANDARD PARKING STALLS: 71  
 COMPACT PARKING STALLS: 26  
 ADA PARKING STALLS: 5  
 STREET STALLS: 15

| REV NO | REVISION DESCRIPTION | DATE | BY |
|--------|----------------------|------|----|
|        |                      |      |    |
|        |                      |      |    |
|        |                      |      |    |
|        |                      |      |    |
|        |                      |      |    |



TITLE: ACSM / ALTA SURVEY  
 77 CENTRAL APARTMENTS  
 CLIENT: TIAA-CREF GLOBAL INVESTMENTS LLC

TJC SURVEYING  
 1189 McKinley Street  
 PO Box 366  
 Puyallup, WA 98922  
 P: 206-940-0263  
 F: 206-940-0263  
 www.tjcsurveying.com